



Feature

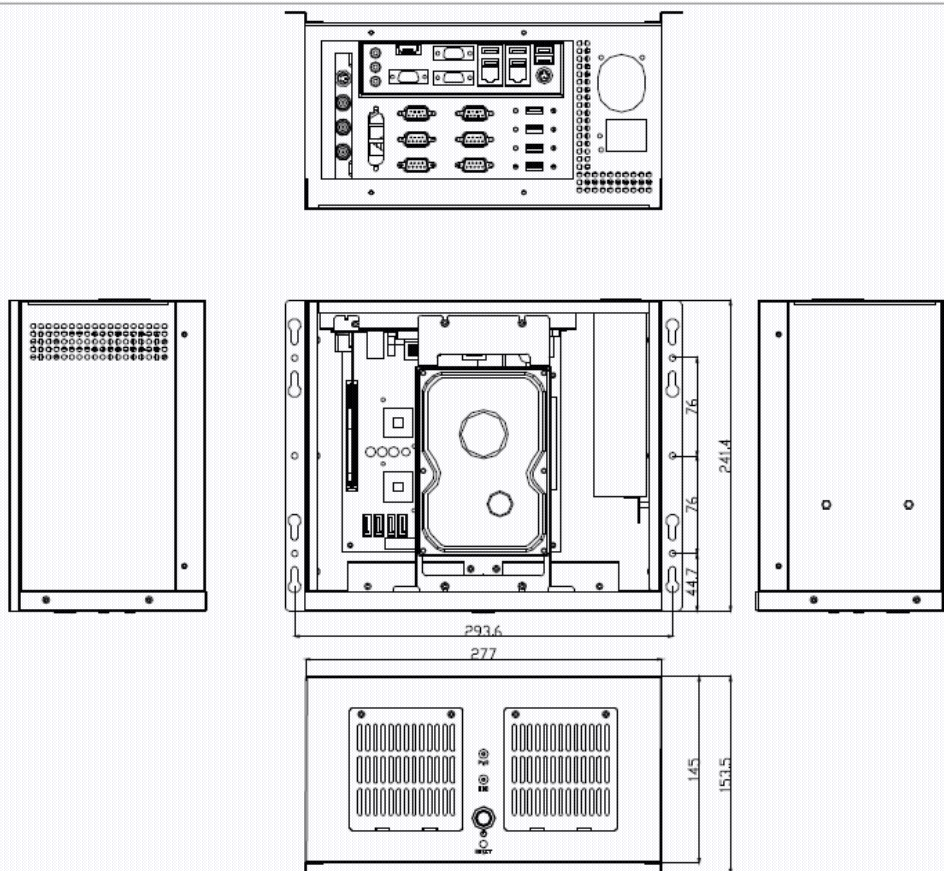
- Support Industrial ATX or Mini-ITX MotherBoard
- Shockproof drive bay for 3.5" HDD
- Support 300W PS2 ATX Power or Flex ATX Supply
- Support Wall-Mount Design
- The best thermal design

Specification

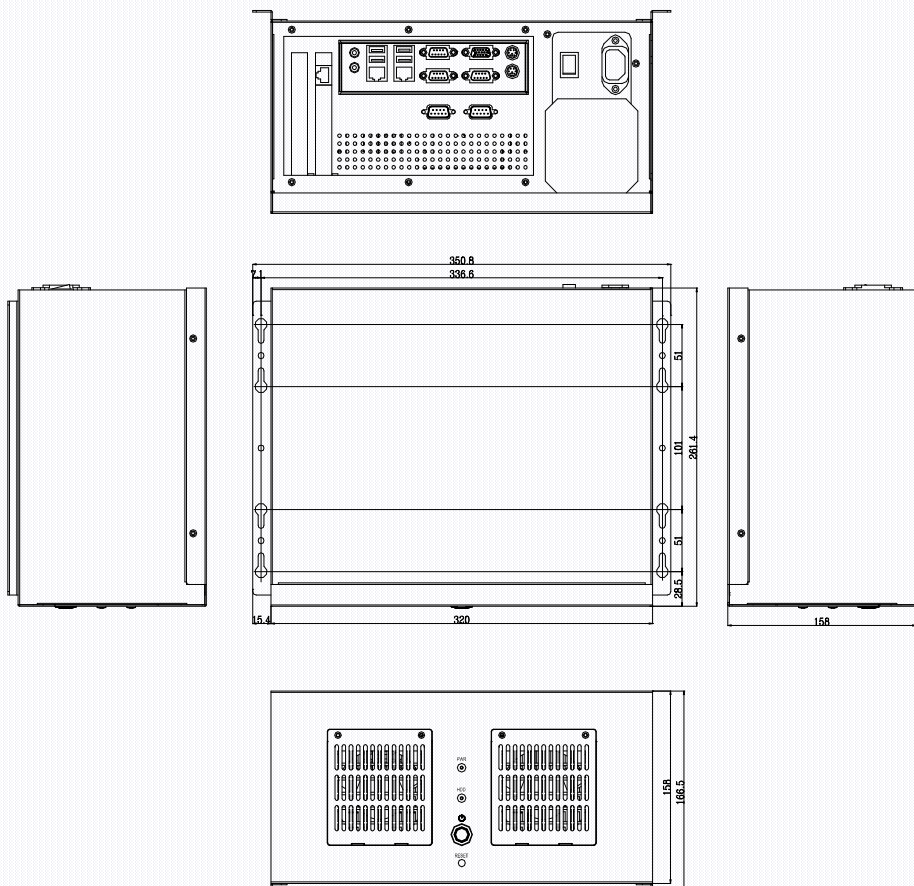
		GT6055WB	GT6055WB-PS2	GT6055WB-ATX
Support Motherboard Type		Mini-ITX (170mm x 170mm)	Mini-ITX (170mm x 170mm)	Mini-ITX(170mm x 170mm) ATX (305mm x 244mm)
I/O Interface	USB	4 (Not Contain M/B Rear IO with USB Port)	Come from the M/B Rear IO	4 (Not Contain M/B Rear IO with USB Port)
	LPT	1 (Decided by the M/B)	1 (Decided by the M/B)	1 (Decided by the M/B)
	COM	6 (Not Contain M/B Rear IO COM Port)	2 (Not Contain M/B Rear IO COM Port)	Up to 14 (Decided by the M/B)
	PS/2	Yes (Decided by the M/B)	Come from the M/B Rear IO	Come from the M/B Rear IO
	Display Port	Decided by the M/B	Come from the M/B Rear IO	Come from the M/B Rear IO
	PCI or PCIe Slot	1 (Decided by the M/B)	2	7
Front Panel		1 x Power Button	1 x Power Button	1 x Power Button
		1 x Power LED	1 x Power LED	1 x Power LED
		1 x HDD LED	1 x HDD LED	1 x HDD LED
		1 x Reset Button	1 x Reset Button	N/A
Cooling	FAN	2 (9cm/2800RPM)	2 (9cm/2800RPM)	2 (8cm/3200RPM)
	Air Filter	Yes	Yes	Yes
Environment	Temperature	-20~70°C	-20~70°C	-20~70°C
	Humidity	5 ~ 90%, non-condensing	5 ~ 90%, non-condensing	5 ~ 90%, non-condensing
Mechanical Structure	Dimensions (WxHxD)	293mm x 241mm x 153mm	320mm x 261mm x 156mm	323mm x 310mm x 175mm
	Material	SECC 1.2	SECC 1.2	SGCC 1.2
	Mouting	Wall-Mount	Wall-Mount	Wall-Mount
Disk Driver Bay	HDD	1 x 3.5" / 1 x 2.5"	1 x 3.5"	1 x 3.5"
	Optical Driver	N/A	N/A	N/A
Power Supply		Flex-ATX Power (Optional Power)	ATX Power (Optional Power)	ATX Power (Optional Power)

Dimensions

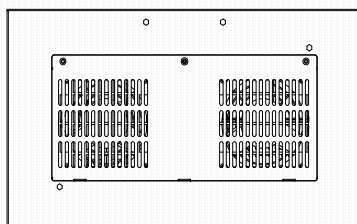
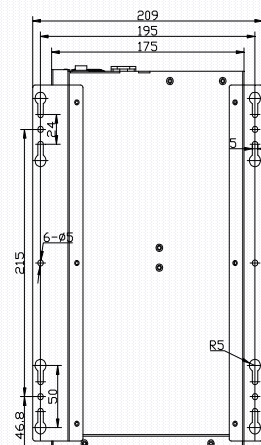
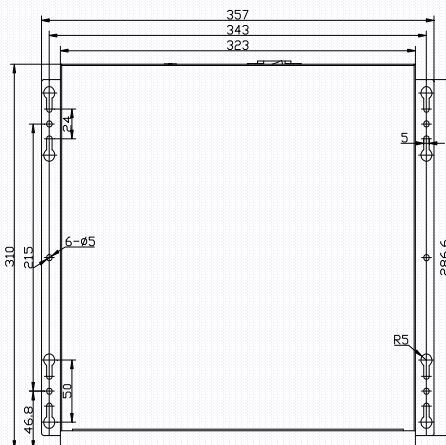
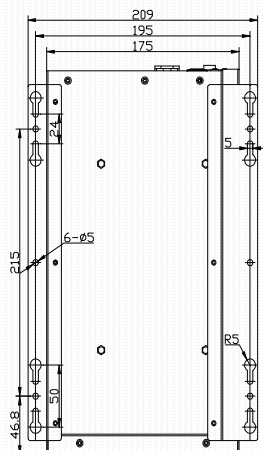
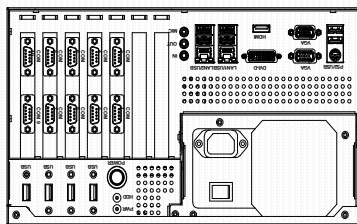
GT6055WB



GT6055WB-PS2



GT6055WB-ATX



Packing List

P/N	Description
	The Package of Screw
	The Wall hanging bars

Optional Accessories

P/N	Description

Ordering Information

P/N	Model	Spec.
	GT6055WB	Compact Industry chassis for Mini-ITX M/B w/Flex-ATX PSU/COM/USB/PCI
	GT6055WB-PS2	Compact Industry chassis for Mini-ITX M/B w/PS2-ATX PSU/COM/USB/2PCI
	GT6055WB-ATX	Compact Industry chassis for ATX M/B w/PS2-ATX PSU/COM/USB/7PCI